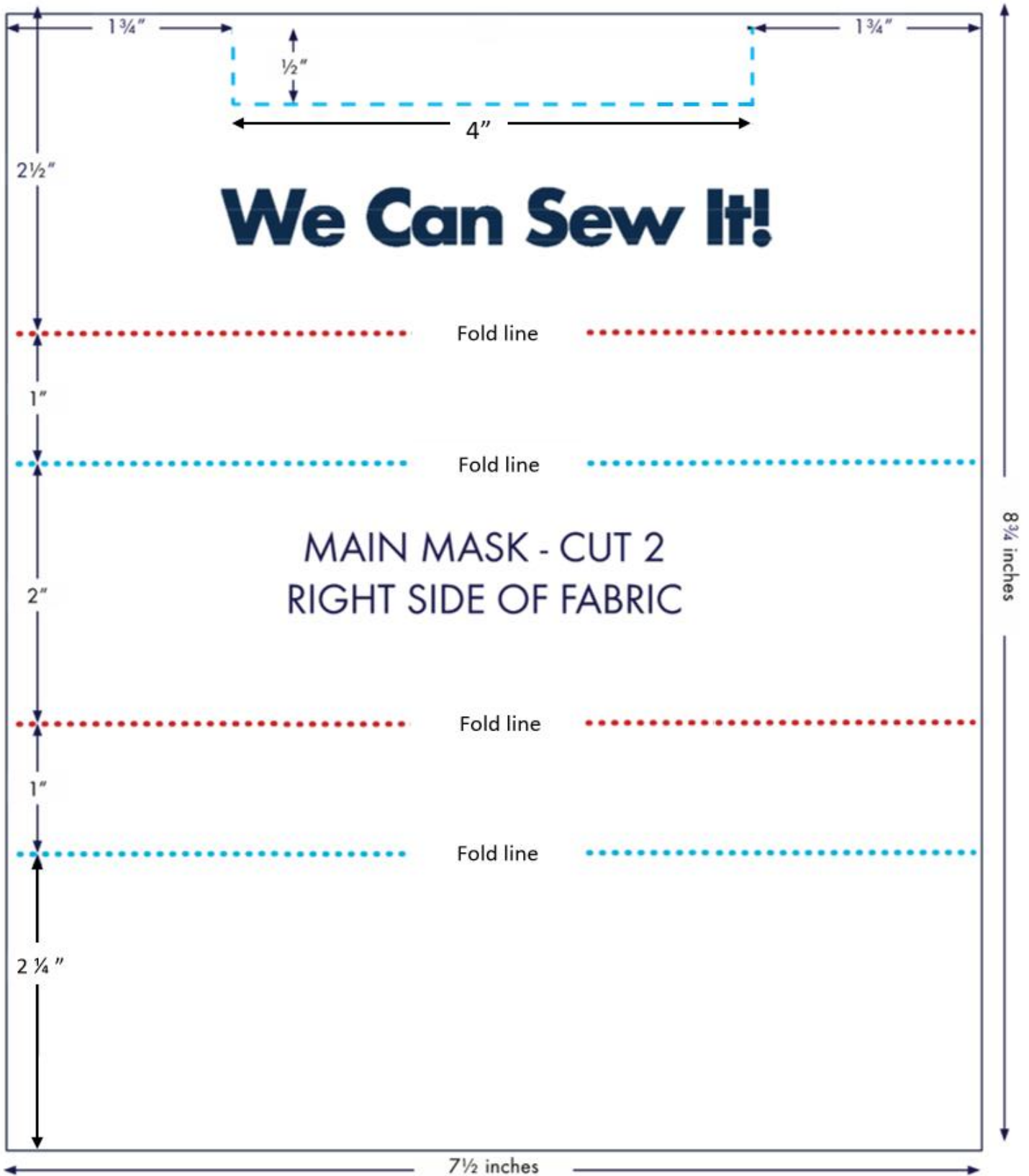


Tie Pattern



## Assembly Instructions

Stitching to be 10 stitches/inch

Use pre-washed material and fabricate in a clean environment or wash completed mask after fabrication.

Unless otherwise indicated all measurement tolerances are  $\pm \frac{1}{8}$ ".

Strap lengths and sewing tolerances are  $\pm 1$ ".

### Step 1:

Place the three layers (Front/Outer, Filter (optional), Back/Inner) on top of each other toward the wrong side of the fabric.

Then stitch the seams on the top and bottom as shown below using a  $\frac{1}{4}$ " or  $\frac{1}{8}$ " seam.

Turn the assembly inside-out to show the right side of the fabric out.

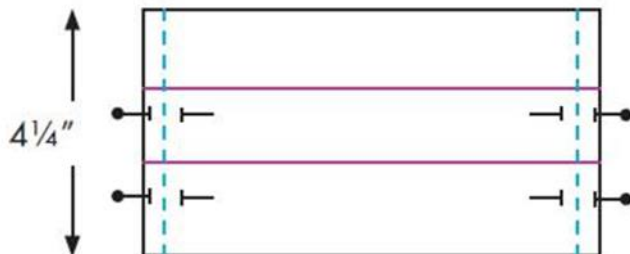


### Step 2:

On each mask piece, mark your pleat fold lines with a fabric pencil (These are the red and blue dotted lines noted in the pattern).

Now fold and iron each pleat with red dotted lines folding the right side of fabric together and blue dotted lines folding the wrong side of fabric together.

Stitch up sides with  $\frac{1}{4}$ " seam.

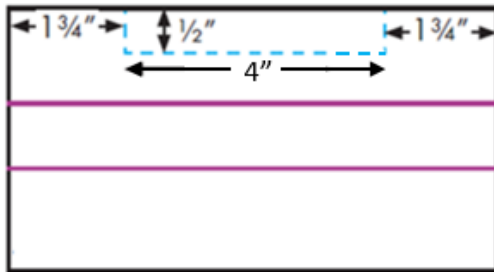


**Step 3:**

Open the mask along the new seam, wrong sides together and press the mask flat. Mark the nose wire pocket with a fabric pencil on mask in the location shown on the pattern diagram.

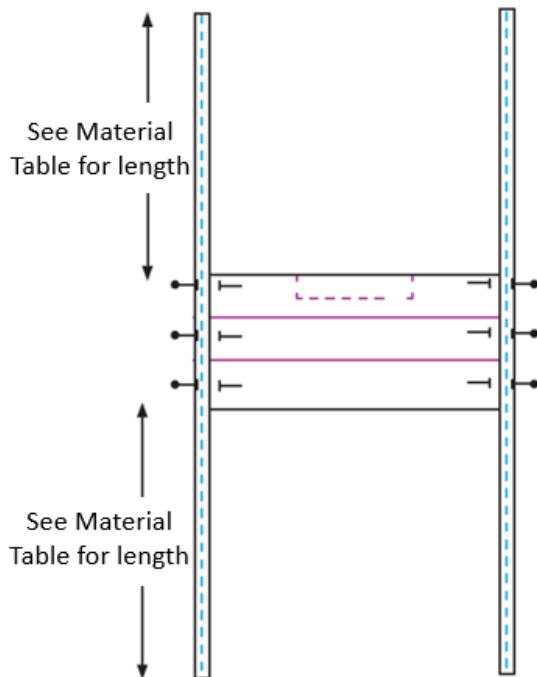
The wire pocket will be a 4" x 1/2" box. Place the nose piece inside of the pocket.

Stitch along the three lines as shown in blue below to enclose the nose piece in the pocket.



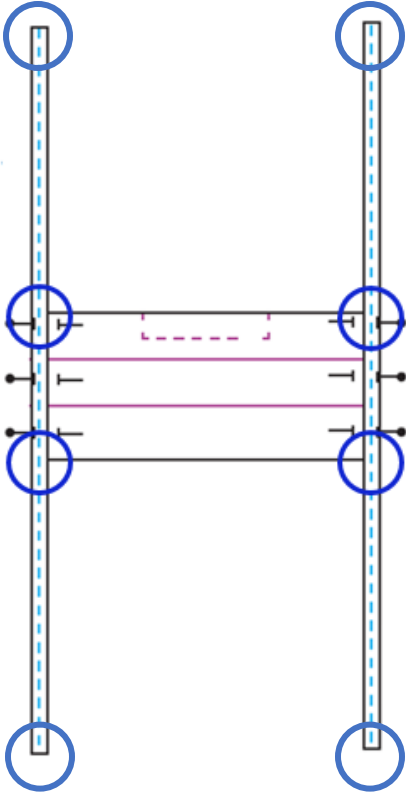
**Step 4:**

Pin 36 inches of 1/4" or 1/2" bias tape to either side of the mask so straps are available at the top and bottom. See material table for strap length. Stitch along the bias tape and through both layers of the mask to complete.



**Step 5:**

Reinforce the stitching where the mask and straps come together at all four corners. Reinforce the stitching at the end of each strap to prevent fraying.



**Final overall mask size 7.5" wide by 4.0" (+ 0.5" / - 0.25") tall**